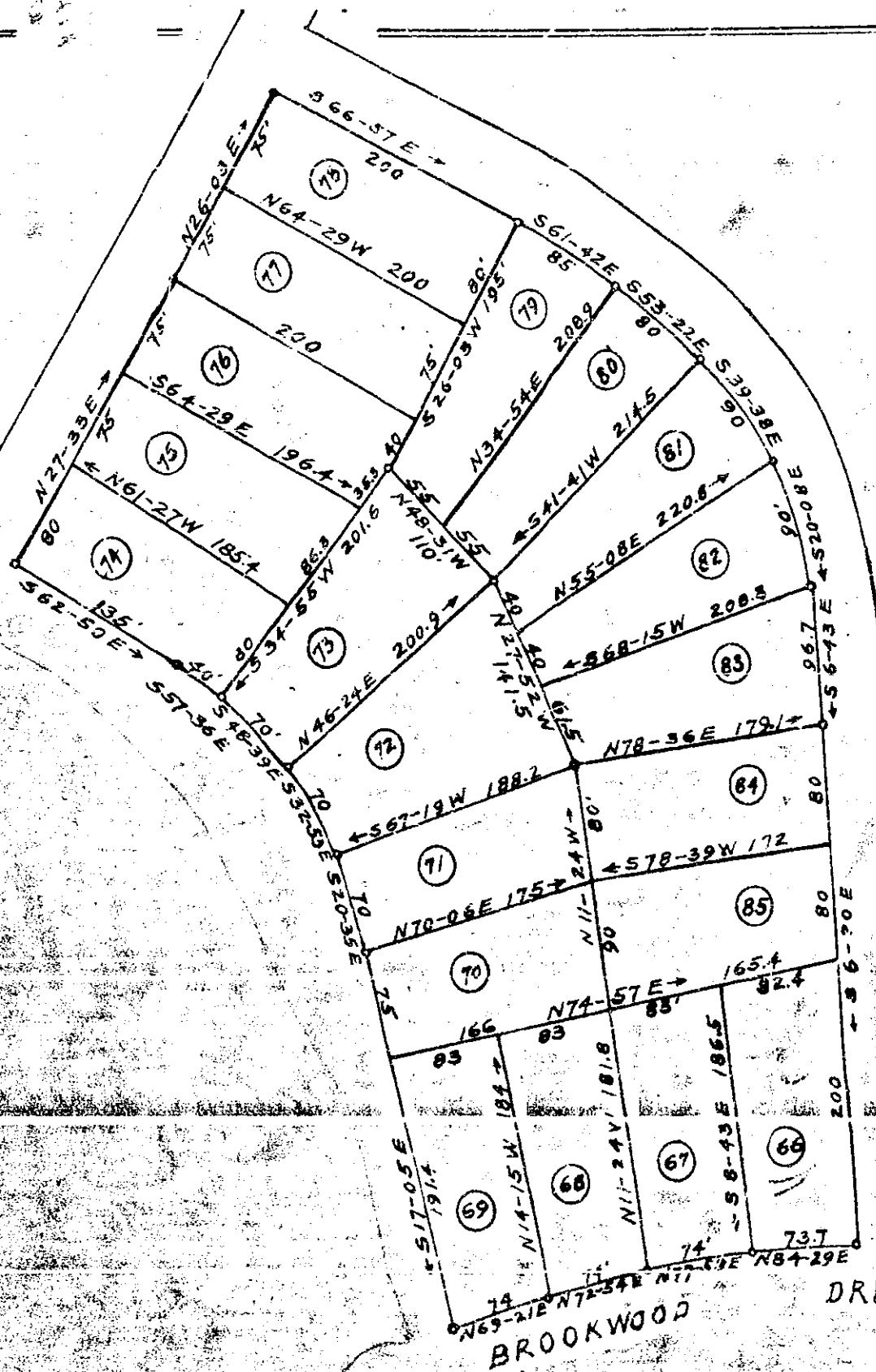


Plat Book I, Page 35A

35



PART OF
COMBINED MAP OF
PLATS NOS. 2 & 3
PARK HILL
NEAR GREENVILLE, S.C.
Scale 1"=100' Revised Nov. 1936.
REDALTON ENG.
F. BOOKS 112-151-156-153.

See page 36 - This Book.

Filed this 10 Day of Jan 1938
and Recorded in Vol. 1 of Plat
Book No. 35
Mrs. Ollie Larnsworth
#368